

Model No.	OSMFXX
REV.	C5

PRODUCT SPECIFICATION FOR **LED Ribbon Light**

Descriptions:

- Linear separable LED strip on flexible printed circuit board with self-adhesive back
- Long life, easy installation
- Voltages available 12VDC
- LED Type: SMD LED, 3.5x2.8mm, 120deg

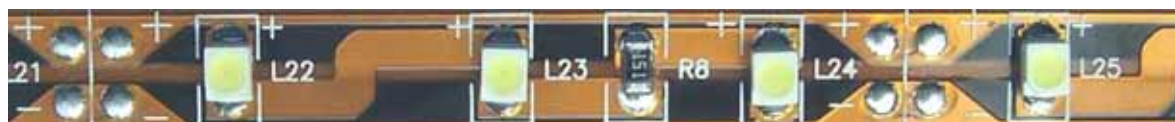
Features:

- Available in red, orange, yellow, green, blue, white
- Directly use on line voltage
- Low power consumption, high intensity
- Energy saving
- Excellent beam control
- Long life

Application:

- Channel letter signs
- Indirect accent décor light
- Large area back lighting
- Under counter light
- Decorate building's contour
- Substitute neon light

Product Picture:



Model No.	OSMFXX
REV.	C5

Device Selection Guide

Module No.	Color	Dom. Wavelength (Typ.)	Intensity / Per LED (Typ.)
OSMFR5	Red	625±5nm	350 mcd
OSMFO5	Orange	605±5nm	350 mcd
OSMFY5	Yellow	590±5nm	350 mcd
OSMFG5	Green	530±5nm	1120 mcd
OSMFB5	Blue	475±5nm	400 mcd
OSMFW5	White	X=0.27 ; Y=0.28	1900 mcd
OSMFM5	Warm White	X=0.45 ; Y=0.41	1250 mcd
OSMFK5	Pink	X=0.45 ; Y=0.17	380 mcd

Absolute Maximum Ratings(Ta=25)

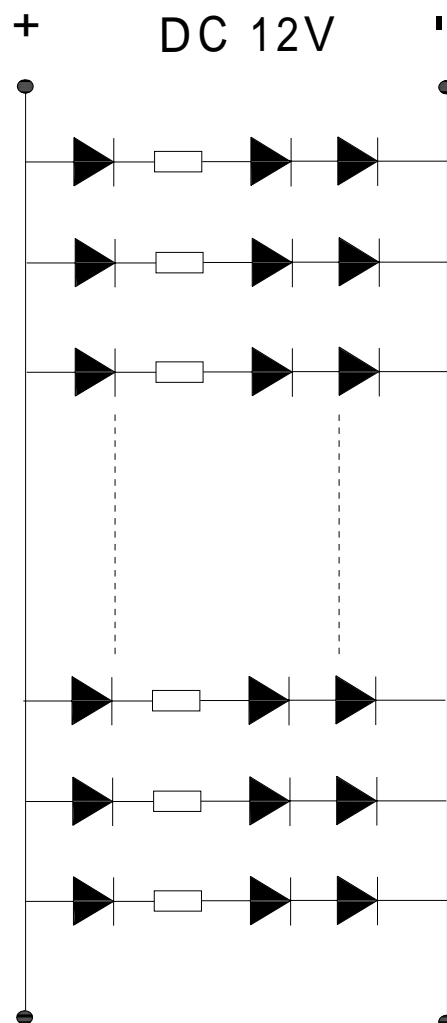
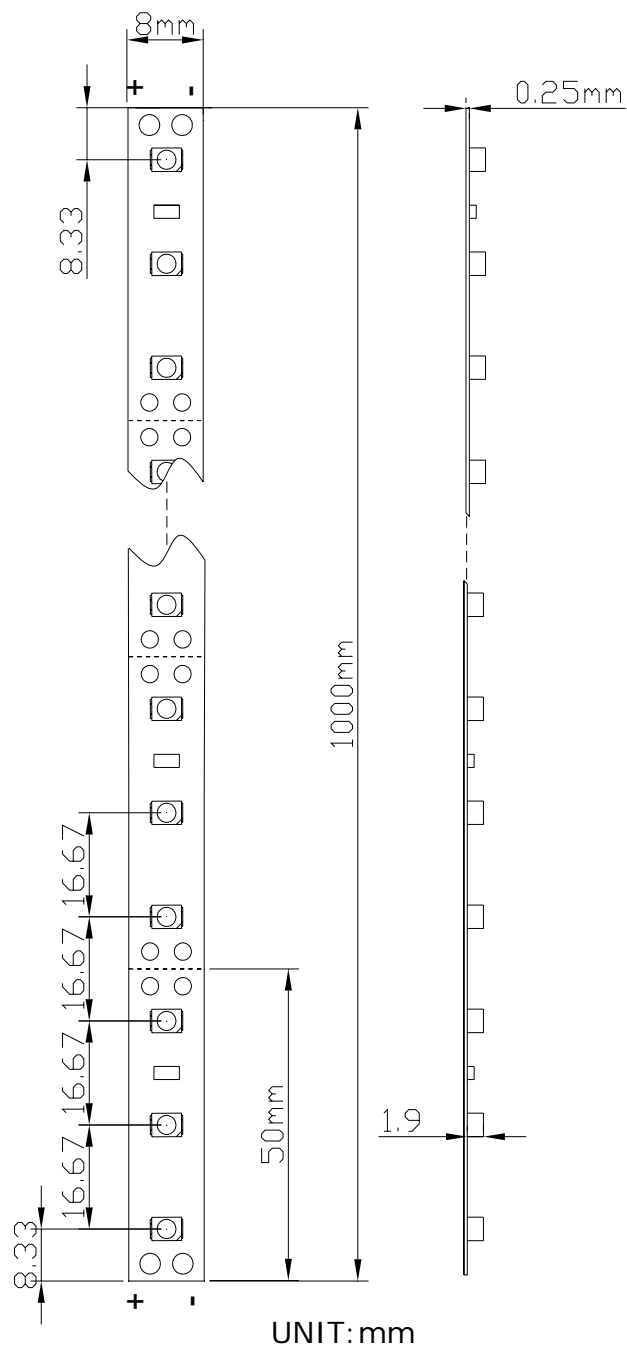
Items	Symbol	Values	Units
Operating Supply Range(DC)	V _{dc}	14	V
Input Current (DC)	I _i	600	mA
Power Dissipation	P _a	8.4	W
LED Light Source Temperature	T _{led}	105	DegC
Operating Temperature	T _{ope}	-10 ~ +40	DegC
Storage Temperature	T _{sto}	-20 ~ +80	DegC

Typical Performance (Ta=25)

Items	Symbol	Min.	Typ.	Max.	Units
LED Module Power	P _m	-	4.8	8.4	w
Input Voltage(DC)	V _i	-	12	14	V
Product Input Current	I _f	-	400	600	mA
Beam Pattern	BP	-	120	-	Deg
LED Quantity of Every Meter	OTY	-	60	-	PCS
Total Length of Modules (Including Pin)	L _{mod.}	-	1000	-	mm
Net Weight	Wei.	---	11	---	g

Model No.	OSMFXX
REV.	C5

Product Dimensions:



Model No.	OSMFXX
REV.	C5

Product Connection:

